



## LANDRY B&B

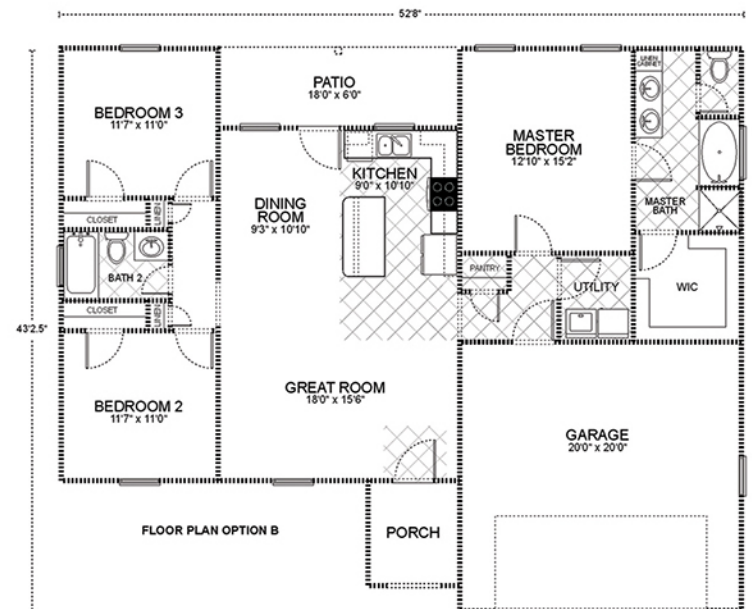
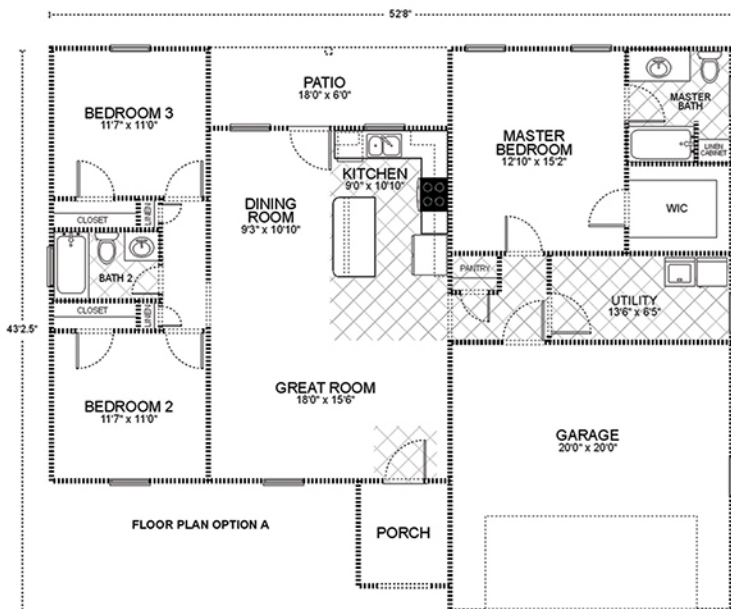
3 Bedroom | 2 Full Bathrooms



# Got Land? Let's Build!

### APPROXIMATE FOOTAGES:

LIVING AREA:	1412 SQ. FT.
PORCH & PATIO AREA:	164 SQ. FT.
GARAGE:	456 SQ. FT.
TOTAL UNDER ROOF:	2032 SQ. FT.



## www.WGRHomes.com

©2024 WGR Homes. Floor plans, dimensions, or any other information shown in this advertisement is subject to change at any time at the sole discretion of the builder. Specifications may vary from one WGR Homes location to another. Illustrations show options and upgrades not included in base price. Colors shown in illustrations may not match actual colors available. Home designs represented on this page are property of WGR Homes and are intended for demonstration purposes only. Any other use is strictly prohibited.