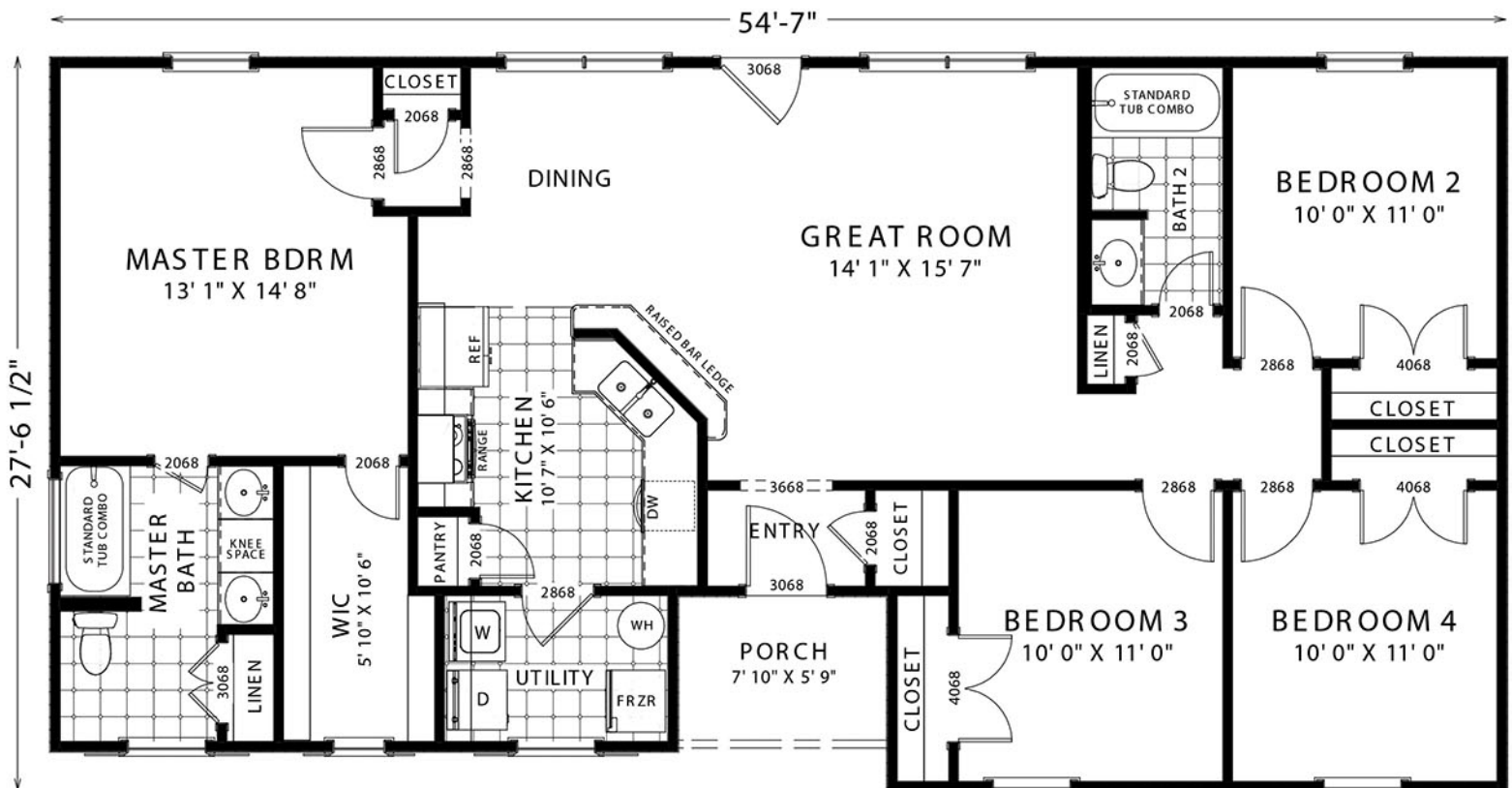


**EL DORADO**

4 Bedroom | 2 Bathrooms



# Got Land? Let's Build!



## APPROXIMATE FOOTAGES:

LIVING AREA:	1405 SQ. FT.
FRONT PORCH:	46 SQ. FT.
TOTAL:	1451 SQ. FT.

[www.WGRHomes.com](http://www.WGRHomes.com)

©2025 WGR Homes. Floor plans, dimensions, or any other information shown in this advertisement is subject to change at any time at the sole discretion of the builder. Specifications may vary from one WGR Homes location to another. Illustrations show options and upgrades not included in base price. Colors shown in illustrations may not match actual colors available. Home designs represented on this page are property of WGR Homes and are intended for demonstration purposes only. Any other use is strictly prohibited.