

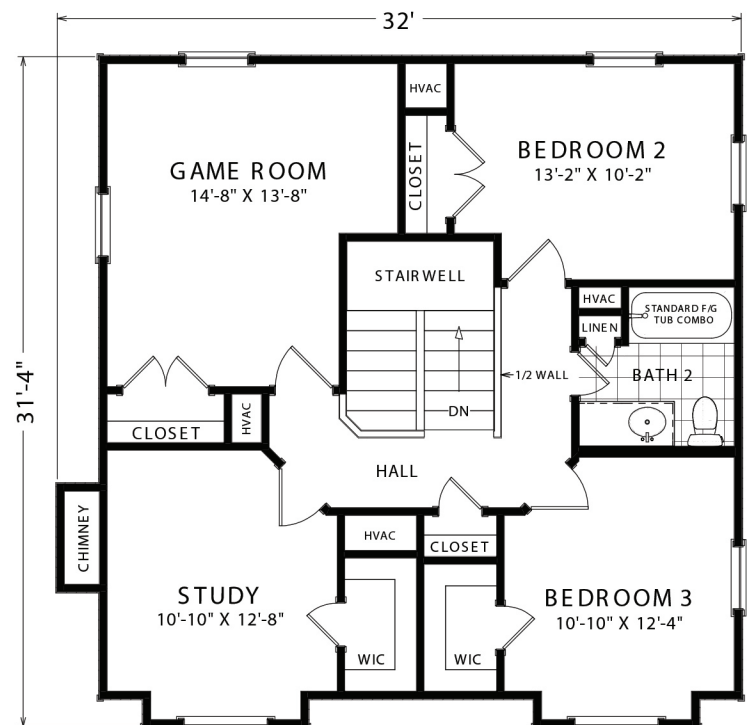
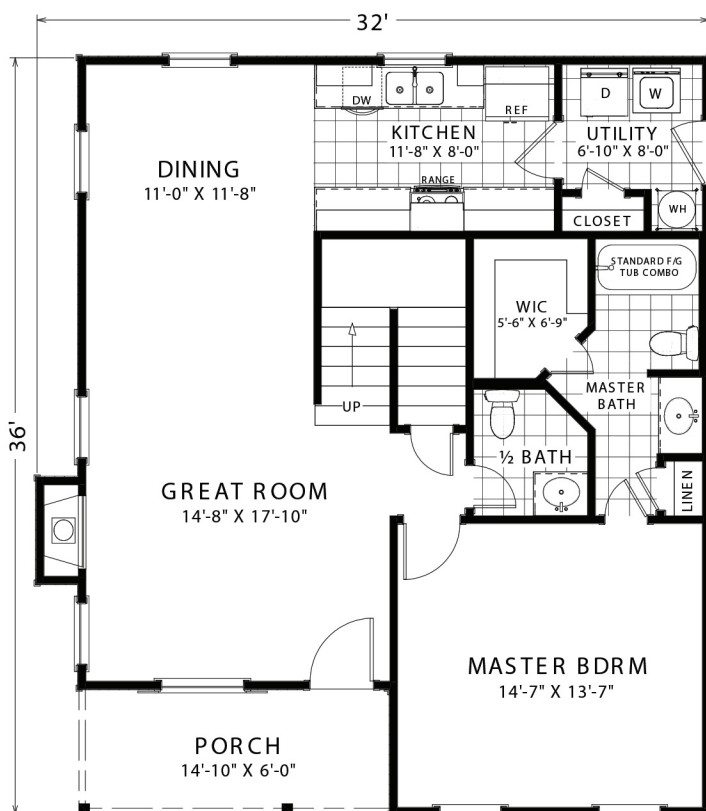


KINGSVILLE

3+ Bedroom | 2.5 Bathrooms



Got Land? Let's Build!



PLAN IS SHOWN WITH A 8 FT. PLATE HEIGHT
(ROOM SIZES ARE APPROXIMATE)

APPROXIMATE FOOTAGES:

1ST FLOOR LIVING AREA:	991 SQ. FT.
2ND FLOOR LIVING AREA:	859 SQ. FT.
PORCH:	89 SQ. FT.
FIREPLACE:	10 SQ. FT.
TOTAL:	1,850 SQ. FT.

www.WGRHomes.com

©2025 WGR Homes. Floor plans, dimensions, or any other information shown in this advertisement is subject to change at any time at the sole discretion of the builder. Specifications may vary from one WGR Homes location to another. Illustrations show options and upgrades not included in base price. Colors shown in illustrations may not match actual colors available. Home designs represented on this page are property of WGR Homes and are intended for demonstration purposes only. Any other use is strictly prohibited.